

LASH EXTENSIONS

Lash Soak Off	R120
Full Set of Classic Lashes	R630
Full Set of Hybrid Lashes	R700
Full Set of Volume Lashes	R750

2 Week Fill	Classic / R280 Volume / R320
-------------	---------------------------------

3 Week Fill	Classic / R300 Volume / R340
-------------	---------------------------------

Extra Time (per 30mins)	Classic / R150 Volume / R175
-------------------------	---------------------------------

Gel Eyepads	R50
-------------	-----

LOVELLA LASH LIFT

Lash Lift	R420
Lash Lift & Tint	R460

BODY TREATMENTS

Full Body Massage (60mins)	R410
----------------------------	------

Lux Full Body Massage (90mins) (Includes body exfoliation)	R600
---	------

Back, Neck & Shoulder Massage (45mins) (Includes back exfoliation)	R330
---	------



We are now
ONLINE AND READY TO HELP
with all your skin care needs!

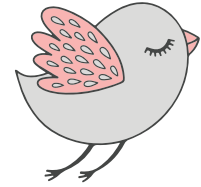
Shop online at: www.thebeautique.co.za



Cash and Credit card facility available.

Gift Vouchers Available

We have a 24 hour cancellation policy and reserve the right to reduce treatment time for untimely arrivals and charge full price.



The Boutique

Skincare you need. Luxury you deserve

31 Everton Road, Kloof

Monday to Friday: 08:00 - 16:30

Saturday: 08:00 - 15:00

Public Holidays: Closed

Contact us:

082 852 6521

kaylee@thebeautique.co.za

Join us today on Facebook and Instagram for all the latest offers, news and events -



Find us on
Facebook



Follow us on
Instagram

TINTING

Brows	R60
Lashes	R80
Lashes and Brows	R110

WAXING

1/2 Leg	R160
3/4 Leg	R180
Full Leg	R220
Underarm	R100 - R120
Bikini Sides	R130
Brazilian (landing strip)	R250
Full Bikini (all off)	R280
1/2 Back, Arm / Chest	R150
Full Back, Arm / Chest	R210
1/2 Tummy	R120
Full Tummy	R170
Lip / Brow / Chin / Side Burns (wax / thread)	R55 per area
Full Face	R180
Brow Tweeze (shape)	R60
Nose / Ears	R60

FINGERS AND TOES

File & Paint	R160
Mini Manicure (no massage)	R190
Mini Pedicure (no massage)	R225
Manicure	R240
Manicure & Gel Polish	R360
Pedicure	R260
Pedicure & Gel Polish	R380
Gel Polish Hands	R250
Gel Polish Toes	R230
Gel Overlay with Full Creative Art	FROM R370
Add Acrylic Dip	R60
Acrylic Dip & Gel Polish	R310
Full Set Tips & Gel Polish	R410
Full Set Tips with French Ombre	R450
French Ombre Gel Overlay	R350
Tip / Nail Repair	R50

Nail Art (per nail / accent nail free)	R15
Medi-Heel Foot Peel & Massage	R230
Add Medi-Heel Foot Peel to Pedi	R175
Soak Off Gel Polish (if we didn't apply it)	R75
Soak Off Tips / Acrylic	R125

FACIALS

Teen Facial (45min)	R410
Essential Facial (60min) (Facial including exfoliation, extractions, massage & specialised mask)	R520
+ Add Beta Plus Peel	R265
+ Lacti-Firm Peel	R290
+ Alpha Peel	R280
Deep Cleanse (75min) (Full essential facial including exfoliation, extractions, machine work &algi mask)	R690
Hydrating Radiance Facial (90min) (Full essential facial including an alpha OR beta plus peel, LED light massage & Esthemax mask)	R890
Anti-Ageing Kalahari Needling (75min) (Facial with light needling, Growth factor mask & decollate massage)	R910

LAMELLE PEELS

(Advanced peel range treating acne, hyperpigmentation,
scarring, ageing and blemishes)

Hydrating Peel (Alpha)	R620
Pigmentation Peel (Beta)	R640
+ Hands	R590
+ Hands & Forearms	R1320
Acne Peel (Beta Plus)	R610
Firming Peel (Lacti-Firm)	R635
Anti-Ageing Peel (Retistore)	R1150
Advanced Anti-Ageing Peel (Retistore Plus)	R1300
Augmented Beta +TCA 15%	R1180
+ Hands	R1300
+ Hands & Forearms	R2100
TCA 15%	R1000
Spot TCA (1ml)	R160

HYDRAFACIALS

Standard Hydrafacial (90min) (An essential facial including Exfoliation, Hydradermabrasion, Skin scrubber, H2O spray, cold therapy & Algi mask)	R970
Luxury Hydrafacial (120min) (A luxurious essential facial including Exfoliation, Hydradermabrasion, Skin Scrubber, Radio Frequency, H2O spray, Ultra sound, advanced face & decollate massage, cold therapy and specialised mask.)	R1290

MICRO-NEEDLING

(Price includes topical anaesthetic & needle)

Full Face	R1250
Full Face & Neck	R1495
Full Face, Neck & Decollate	R2150

ADD-ONS FOR FACIALS / PEELS / MICRO-NEEDLING

+ Extractions & Mask	R210
+ 15min Machine Work	R150
(Hydradermabrasion, Skin scrubber, Multi-polar Radio frequency, Ultrasound, Cold therapy, H2O Spray)	
+ Alginate Mask	R130
+ Growth Factor Mask	R160
+ Jelly Mask	R170
+ 20min LED Light Therapy & Massage	R150
+ Lamelle Retinol Serum (1ml)	R170
+ Mesostetic De-Pigment Serum (1ml)	R180
+ (DMAE 3%) Mesostetic Anti-Ageing Serum (1ml)	R170
+ Lamelle Brightening Serum	R150
+ Lamelle HA Serum	R170

MICRO-BLADING

Full New Brows	R1300
Touch up	R900