

## HYDRAFACIALS

Standard Hydrafacial (90min) R1020  
An essential facial including Exfoliation, Hydradermabrasion, Skin scrubber, H2O spray, cold therapy & Algi mask

Luxury Hydrafacial (120min) R1370  
A luxurious essential facial including Exfoliation, Hydradermabrasion, Skin Scrubber, Radio Frequency, H2O spray, Ultra sound, advanced face & decollete massage, cold therapy and specialised mask

## MICRO-BLADING

Full New Brows R1400  
Touch up R1000

## LASH EXTENSIONS

Lash Soak Off R200  
Full Set of Classic Lashes R650  
Full Set of Volume Lashes R700  
Partial Set Lashes R520  
1 Week Fill R270  
2 Week Fill R300  
3 Week Fill R340  
4 Week Fill R380

\*Fills longer than 4 weeks will be charged as a partial set\*

## LASH LIFT / BROW LAMINATION

Lash Lift R420  
Lash Lift & Tint R460  
Brow Lamination (includes Tint) R350

## BODY TREATMENTS

Full Body Massage (60mins) R490  
Back, Neck & Shoulder Massage (45mins) R400  
(Includes back exfoliation)



We are now  
ONLINE AND READY TO HELP  
with all your skin care needs!

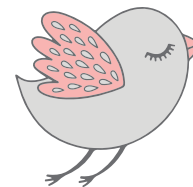
Shop online at: [www.thebeautique.co.za](http://www.thebeautique.co.za)



Cash and Credit card facility available.

## Gift Vouchers Available

We have a 24 hour cancellation policy and reserve the right to reduce treatment time for untimely arrivals and charge full price for missed appointments



# The Beautique

Skincare you need. Luxury you deserve

31 Everton Road, Kloof

Monday to Friday: 08:00 - 16:30  
Saturday: 08:00 - 15:00  
Public Holidays: Closed

Contact us:

082 852 6521

[kaylee@thebeautique.co.za](mailto:kaylee@thebeautique.co.za)

Join us today on Facebook and Instagram for all the latest offers, news and events -



Find us on  
Facebook



Follow us on  
Instagram

## TINTING

Brows	R70
Lashes	R100

## WAXING

½ Leg	R185
¾ Leg	R210
Full Leg	R250
½ Arm	R165
Full Arm	R220
Underarm	R135
Bikini Sides	R160
Brazilian (landing strip)	R285
Full Bikini (all off)	R300
Extended Full Bikini (incl.bum)	R330
Back	R260
Chest	R175
Tummy	R175
½ Tummy	R135
Full Chest & Tummy	R260
Lip/Brow/Chin/Side Burns/Fingers/Toes	R65
Full Face (Lip, Chin, Side Burns, Hair Line, & Jawline)	R285
Full Face (All the above incl.brows)	R330
Nose / Ears	R70
Hairline / Jawline / Hands	R85

## FINGERS AND TOES

(If applied by us, Soak-offs are included in all gel application prices\*)

File & Paint	R190
Mini Manicure (no massage)	R230
Mini Pedicure (no massage)	R275
Manicure	R290
Manicure & Gel Polish	R430
Pedicure	R310
Pedicure & Gel Polish	R450
Gel Polish Hands	R300
Gel Polish Toes	R275
+ Add Acrylic Dip	R70
+ Add Foot Scrub, File & Cream Application	R160
Full Set Tips & Gel Polish	R495
Full Set Tips & Gel Ombre	R540

## FINGERS AND TOES

Ombre Gel Overlay	R385
Per Tip Application	R25
Nail Repair (if gel chips before 7 days, repairs will be done for free)	FROM R10
Transfer Foil	R5
Detailed Nail Art (per nail)	FROM R15
Foot Peel & Massage	R300
+ Add Foot Peel to Pedi	R210
Soak Off Gel Polish (if we didn't apply it/hot reapplying)	R95
Soak Off Tips/Acrylic Overlays	R150

## FACIALS

Mini Facial (60min) Essential facial excluding full facial massage	R490
Teen Facial (45min)	R460
Essential Facial (75min) Facial including exfoliation, extractions, massage & specialised mask	R580
+ Add Beta Plus Peel	R295
+ Lacti-Firm Peel	R320
+ Alpha Peel	R310
Deep Cleanse (90min) Full essential facial including exfoliation, extractions, machine work & alginate mask	R770
Anti-Ageing Booster Facial (90min) Full essential facial with RF & Ultrasound machine work	R780
Hydrating Radiance Facial (90min) Full essential facial including an alpha OR beta plus peel & jelly mask	R995
<b>NEEDLING / FACIAL COMBOS</b> Please note: These facial/light needling combos are not indicated as collagen induction therapies	
Kalahari Needling Facial (75min) Essential facial with light needling & decollate massage. Great for texture, pore size, blood circulation & product penetration	R860
Nova Needling Basic Facial (90min) Cleanse, exfoliation, numbing, light needling & alginate mask	R1040
Nova Needling Advanced Facial (90min) Cleanse, alpha peel, numbing, needling & growth factor sheet mask	R1275

## LAMELLE PEELS

Advanced peel range treating acne, hyperpigmentation, scarring, ageing and blemishes

Hydrating Peel (Alpha)	R690
Pigmentation Peel (Beta 15 or 20%)	R690
Pigmentation Peel (Beta 30%)	R800
+ 1ml for extra layers	R130
+ Hands	R800
+ Hands & Forearms	R1800
+ ADD TCA 15% per ml	R180
Acne Peel (Beta Plus)	R690
Specialised Acne Peel (Aze-ac)	R730
Firming Peel (Lacti-Firm 30/10)	R670
Firming Peel (Lacti-Firm 90/10)	R745
Age Prevention Peel (Rice Bran AO)	R650
Anti-Ageing Peel (Retistore)	R1270
Advanced Anti-Ageing Peel (Retistore Plus)	R1430
Augmented Beta +TCA 15%	R1380
+ Hands	R1450
+ Hands & Forearms	R2340
Mela-Vita (Advanced Pigment Peel Programme)	R5290

## MICRO-NEEDLING

Price includes topical anaesthetic & needle

Full Face	R1390
Full Face & Neck	R1600
Full Face, Neck & Decollate	R2300

## ADD-ONS FOR FACIALS & MICRO-NEEDLING

+ Extractions & Mask	R235
+ 15min Machine Work (Skin scrubber, Multi-polar, Radio frequency, Ultrasound, Cold therapy, H2O Spray)	R180
+ Alginate Mask	R150
+ Growth Factor Sheet Mask	R180
+ Jelly Mask	R210
+ 15min LED & Massage	R190
+ Lamelle Retinal 0.3 1ml	R160
+ Lamelle HA / Rejuvenate Serum	R180
+ Lamelle Brightening Serum	R160
+Lumi Glo Sheet Mask	R140
+Lumi Glo Eye Mask	R50